

LSFF 2020 Visual Guide: Institute of Contemporary Arts

[The Mall, St. James's, London SW1Y 5AH](#)

Festival contact - access@shortfilms.org.uk

Venue contact - newboxoffice@ica.art

Getting to the venue

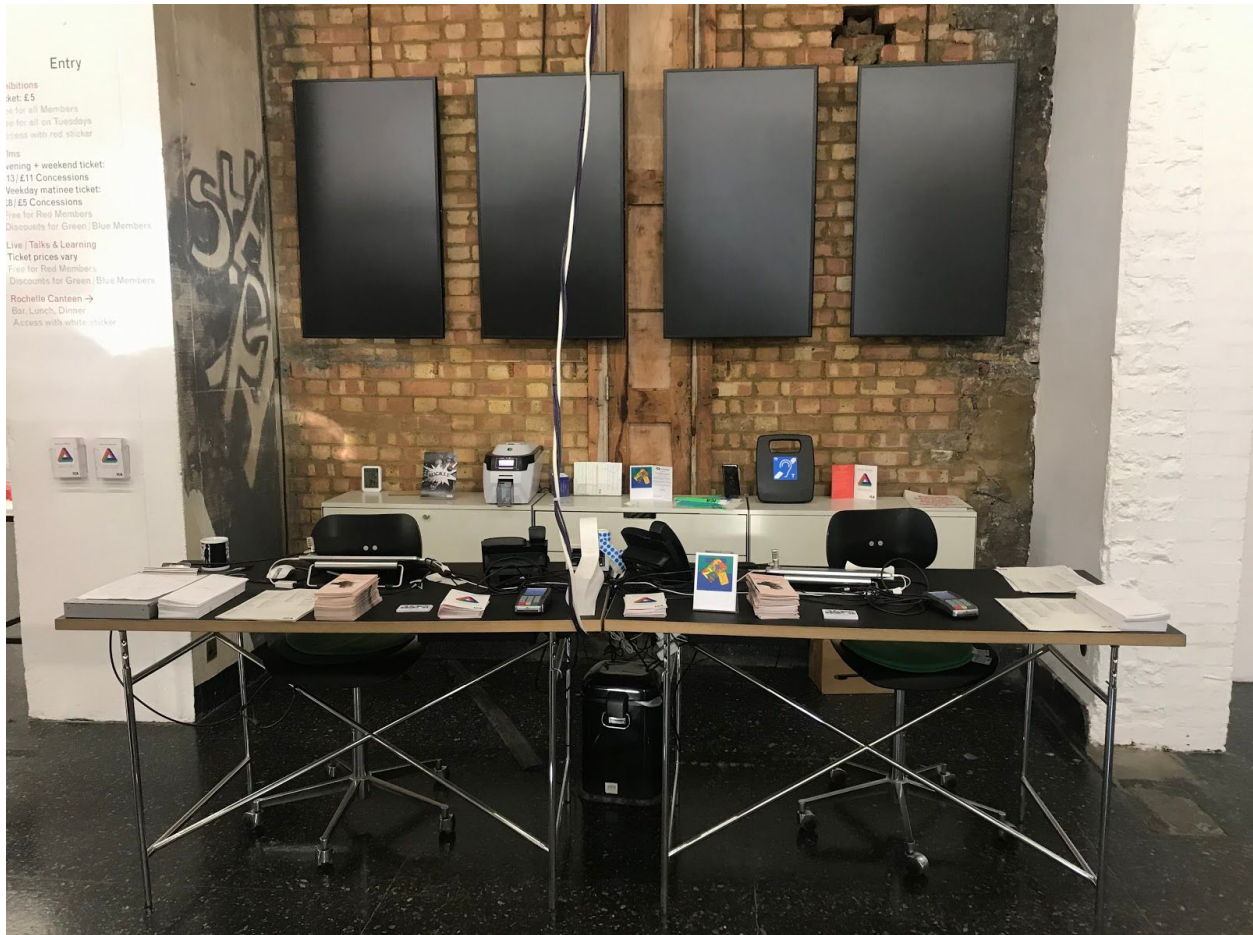
The ICA is located in the heart of central London between Buckingham Palace, 10 Downing Street and Piccadilly Circus. Charing Cross is the nearest tube and train station, 0.4 miles away. There is no parking on The Mall, but car and taxi passengers can be dropped off at the main entrance.

Arriving at the venue



This is the entrance to the ICA. There is one step onto the pavement from the entrance, but there is a small ramp to the left of the door. Inside the main door is a set of automatic doors, which leads you to the box office.

The box office



This is the ICA box office. It is located in the main entrance of the ICA, and it is where you can buy or pick up tickets. There is a hearing loop system in place. If you have a question, the staff at the desk can help you.

The bar and theatre



To get to the bar, you have to go down this corridor from the box office.



This is what the bar looks like, where you can order snacks and drinks before an event.



Here is where you can sit in the bar. It can get noisy and busy on weekends and evenings.



This is the door to the theatre. There are several steps into the theatre, and a platform lift next to them. Please ask a member of staff for assistance when using the lift.

The cinemas



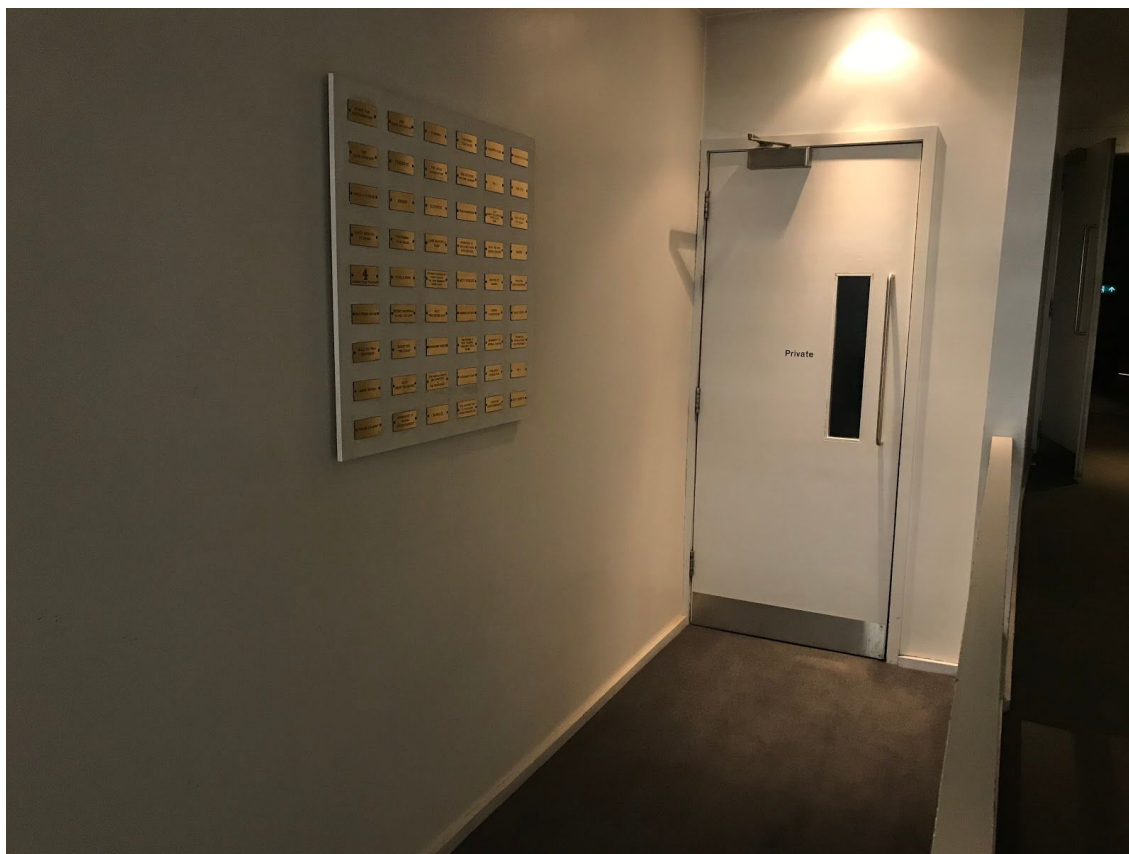
This is the main entrance to the cinemas, to the left of the box office. There is seating available here and this is also where the festival desk will be. Here is also the main entrance to Cinema 2, which is up three stairs. Doors to the cinemas will open ten minutes before the screenings start.



This is the main entrance to Cinema 1. To get to Cinema 1, you go through these doors and through the doors at the end of the corridor. Getting into cinema 1 is fully accessible.



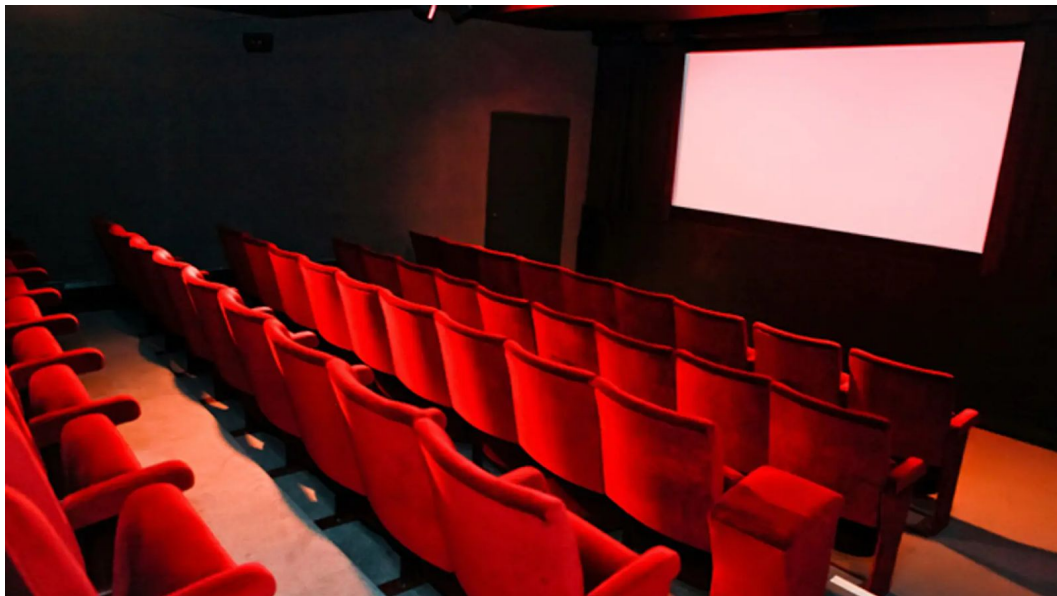
This is the inside of Cinema 1. It has a capacity of 186, and the wheelchair space is located towards the back by the main entrance.



This is the accessible entrance to Cinema 2. To get to it, you go through the main entrance for Cinema 1, and through the side door marked private.



You then go through this second door, which leads into Cinema 2.



This is the inside of Cinema 2. It is smaller than Cinema 1, has a capacity of 45, and the wheelchair space is located towards the front by the accessible entrance.

Accessible toilets



This is the entrance to the accessible toilet. It is found in the main entrance to the ICA, next to the bookshop. You do not need a Radar key to use it.